

PARK HYATT CHICAGO
SUITES



PARK HYATTCHICAGO



the SUITES

PARK SUITE
EXECUTIVE SUITE
GOLD COAST SUITE
LAKE SUITE
WATER TOWER SUITE

**13 suites total*



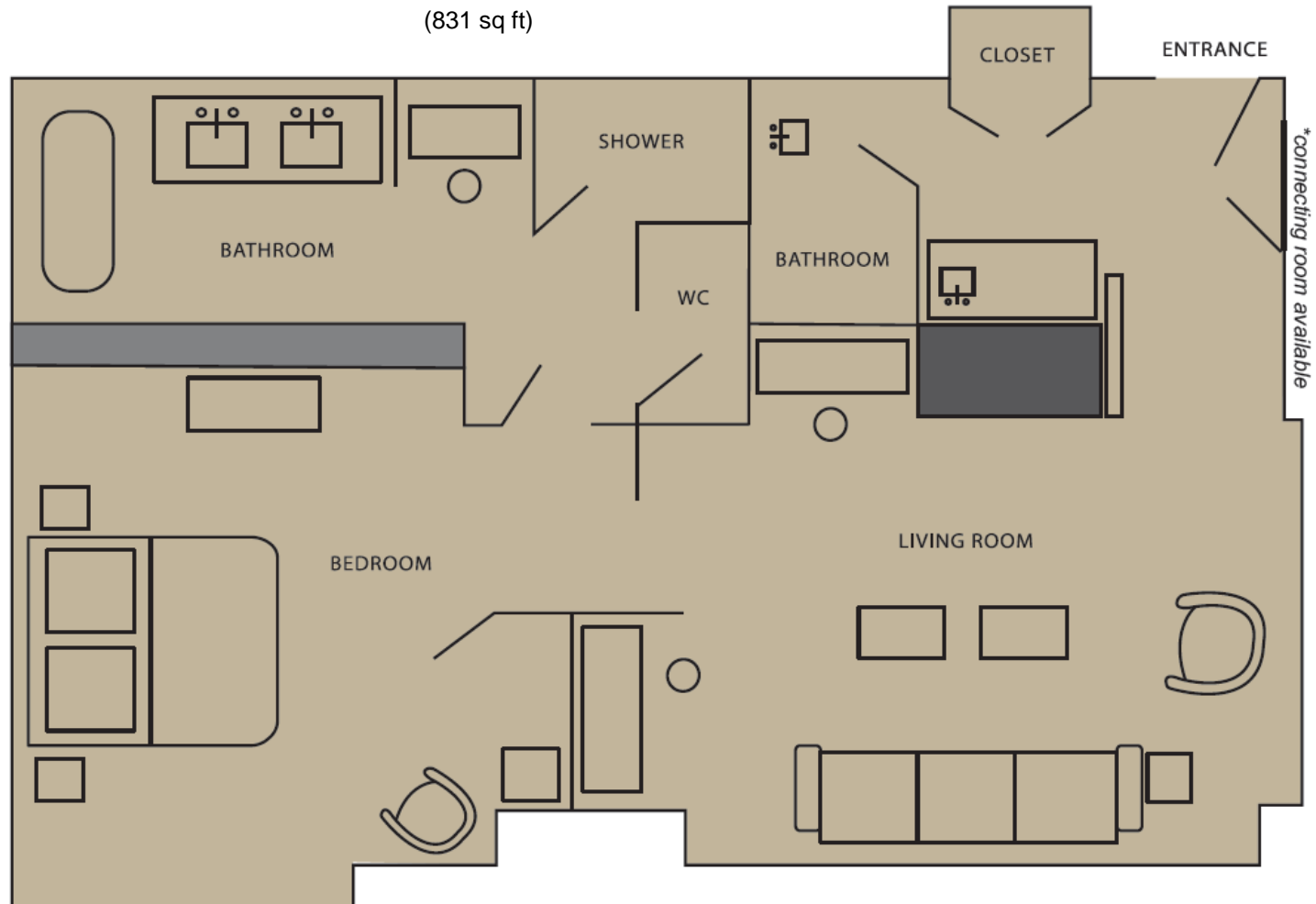
PARK SUITE

This suite offers a marble foyer, living and dining areas, wet bar, office, guest bath and bedroom with one king-sized Simmons Beauty rest Park Hyatt bed. Every pampering amenity is yours including master bath with separate tub and dual-head shower, robes, DVD player upon request, complimentary internet access, Geneva sound system, 42" flat screen TV, and newspaper.



PARK SUITE

(831 sq ft)



**connects to Park Twin or Park King*



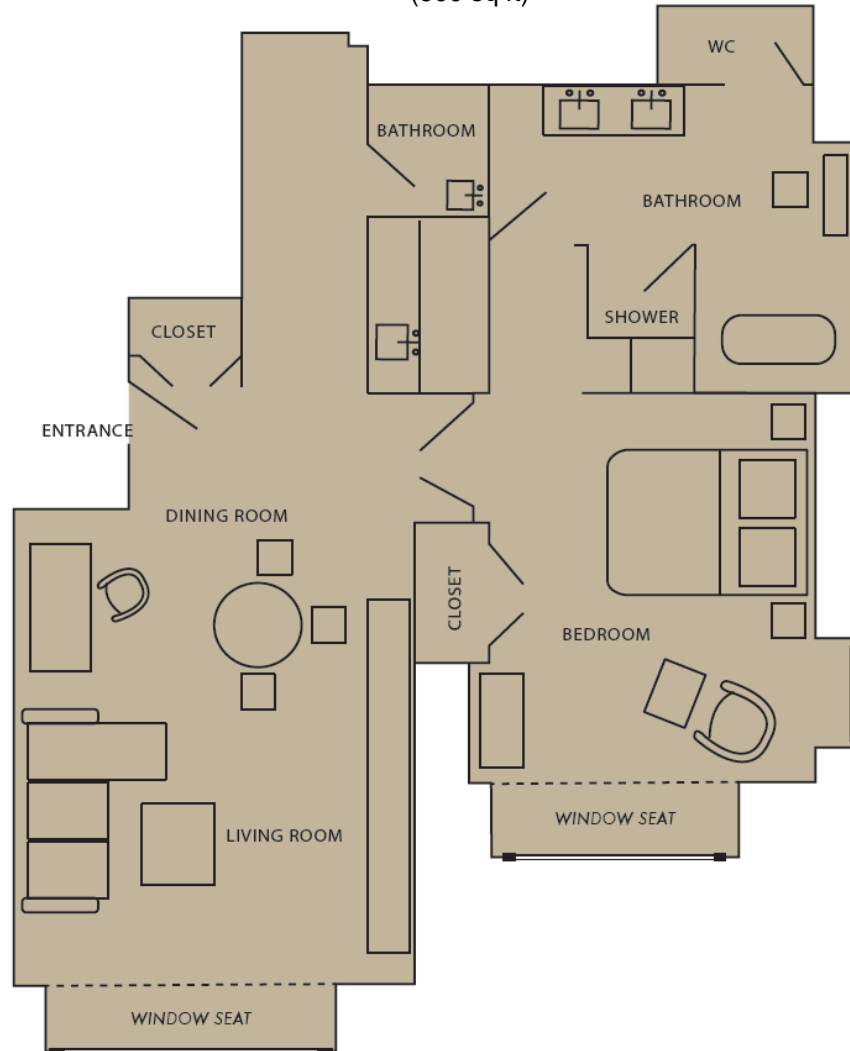
EXECUTIVE SUITE

Greet guests in the marble foyer of this 900-square-foot accommodation with views of Lake Michigan or Chicago's historic Watertower Place. The Executive Suite includes a parlor with a half bath, office and bedroom with one king-sized Simmons Beautyrest Park Hyatt bed, wet bar, complimentary internet, Geneva sound system, 42" flat screen TV, elegant bath with oversized tub and personal flat screen TV, robes and shoe shine.

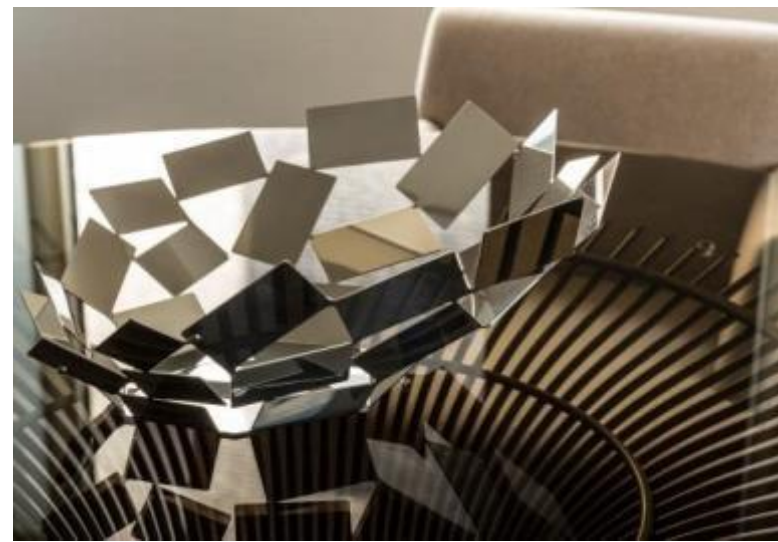


EXECUTIVE SUITE

(900 sq ft)



**connects to Park Twin*



GOLD COAST SUITE



A private entrance hall creates a residential sense of arrival to the Gold Coast Suite offering an elegant wet bar and dining area leading to the open-plan seating area. The suite is ideal for entertaining or impromptu business meetings and, with flexible space of up to 1,000 square feet, it has become a family favorite. The parlor room features spectacular views of Lake Michigan and the historic Water Tower while the bedroom faces the West of the city for lovely sunset views - the best of both worlds.

GOLD COAST SUITE

(1,000 sq ft)



**connects to Park Twin & Park King*

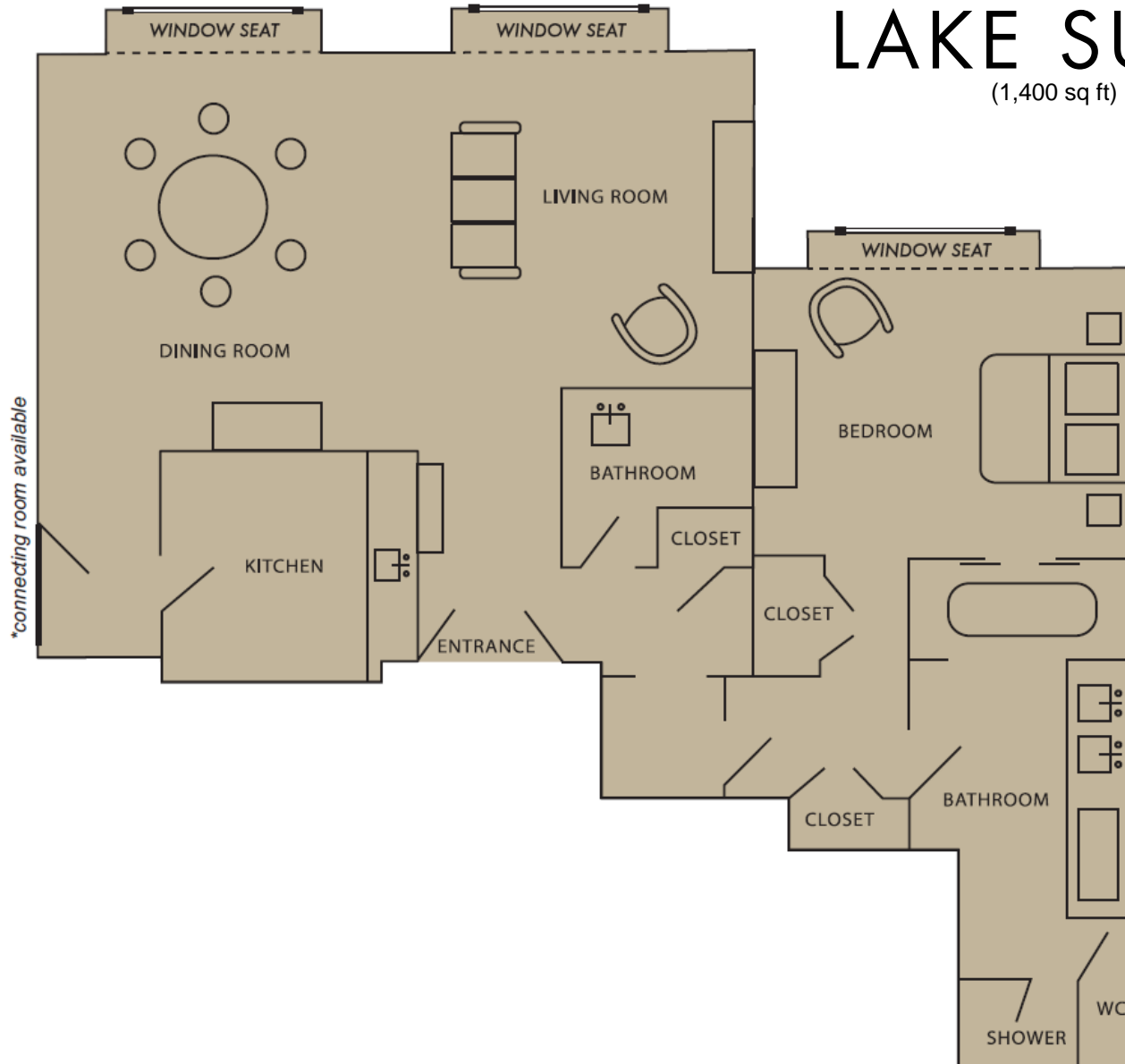
LAKE SUITE

With one of the best views of Lake Michigan in the city, the Lake Suite offers an open living room, kitchenette, and two bathrooms that are spacious and uncluttered, maximizing the light and dramatic views of Chicago's expansive lakefront.



LAKE SUITE

(1,400 sq ft)



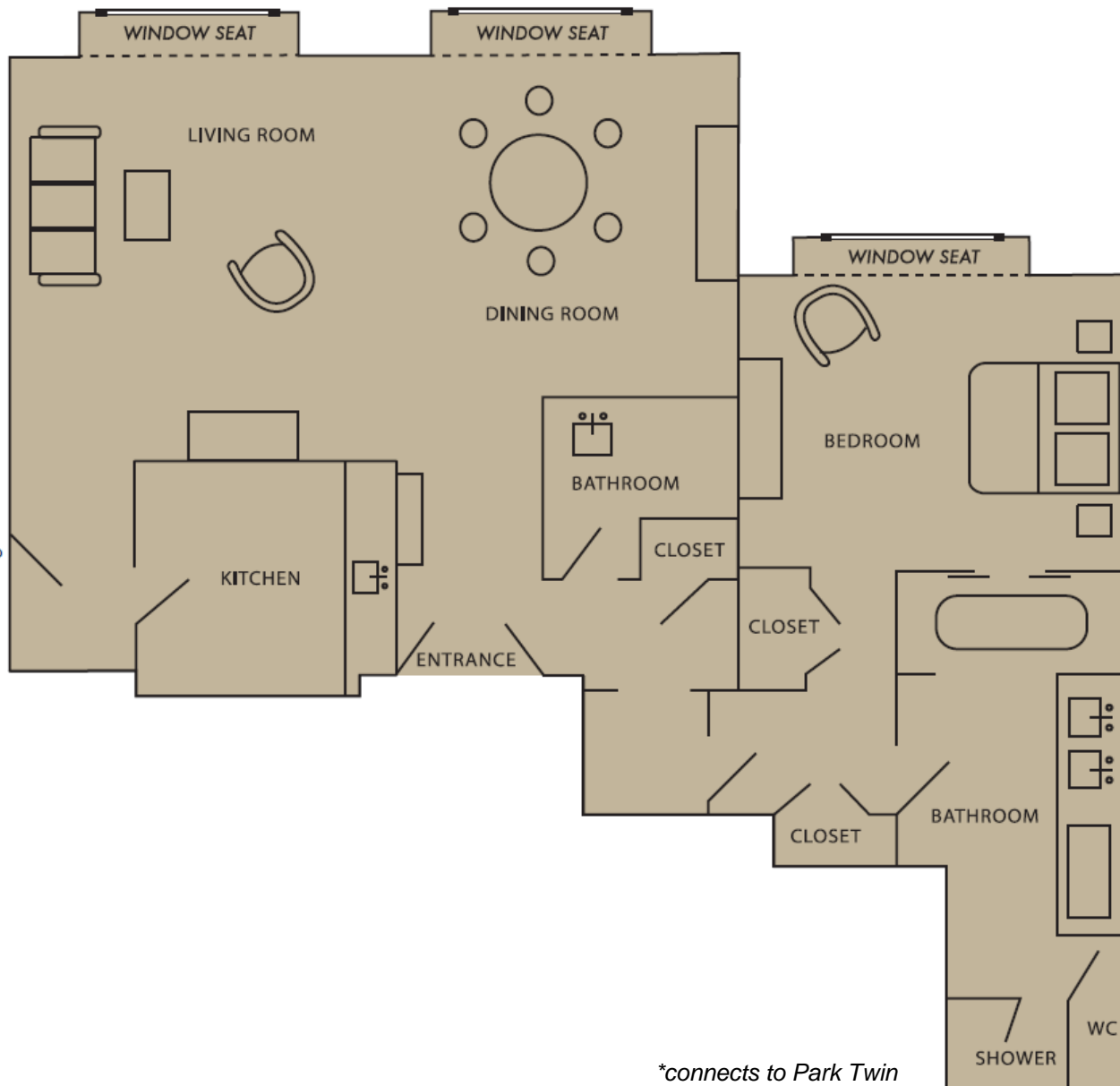


LAKE SUITE *with* BOTTEGA VENETA



With stunning views of Lake Michigan, this suite is sleek and minimalist boasting furniture from Bottega Veneta's collection. The palette is warm and light, composed of signature Bottega Veneta neutrals with graphic accents in ebony and black. The plush suite's floors are draped with soft New Zealand wool carpets while suede, leather, Ashahi bookcloth and mohair velvet are used as wall coverings, upholstery and window treatments. Leather pillows, hand-carved Venetian glassware and cashmere throws, objects from Bottega Veneta's home collection, provide lavish finishing details.

*connecting room available



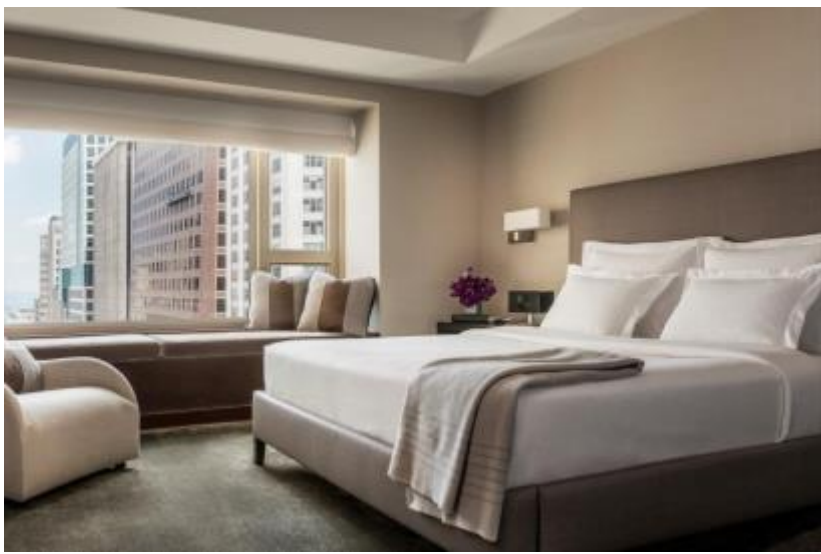
*connects to Park Twin

LAKE SUITE

with

BOTTEGA VENETA

(1,400 sq ft)



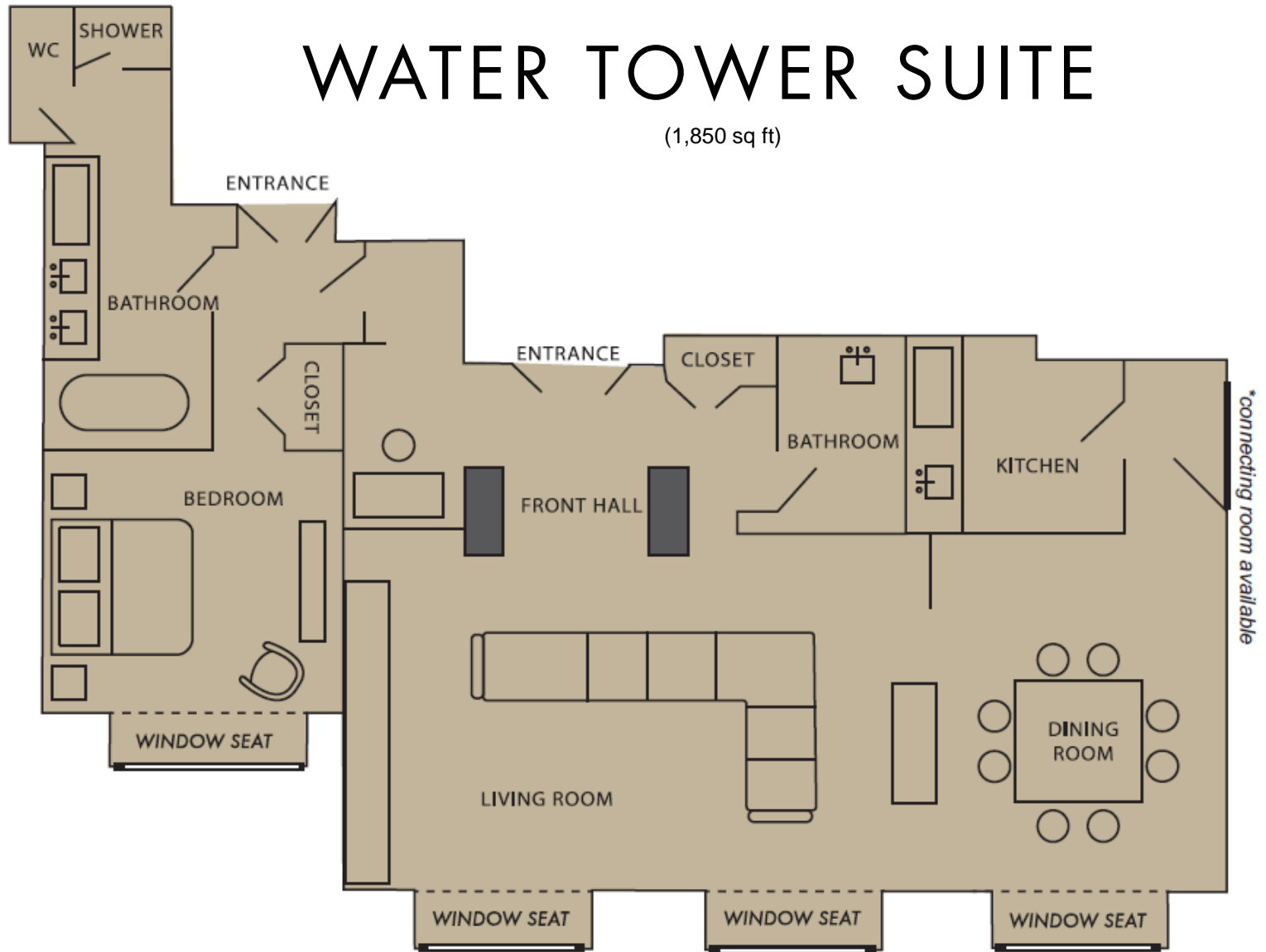
WATER TOWER SUITE

Live in residential splendor in this 1,850-square-foot suite offering magnificent views of Lake Michigan and Chicago's historic Watertower Place. Pampering amenities include marble foyer, spacious living and dining areas, kitchen, wet bar, half bath, office and bedroom with one king-sized Simmons Beautyrest Park Hyatt bed, clothes pressing, shoe shine, 24-hour concierge, complimentary internet access, Geneva sound system, and a 42" flat screen TV.



WATER TOWER SUITE

(1,850 sq ft)



**connects to Park Twin*

STANDARD SUITE AMENITIES

- Wetbar
- Separate sitting area
- Separate work area
- Oversized work desk
- Enhanced desk lighting
- Plush Robes
- Sunken over-sized marble bath
- Hairdryer
- Iron/ironing board
- 24 hour in-room dining service
- Coffee maker
- 42" flat screen TV
- Video on demand
- DVD Player upon request
- Geneva sound system
- Dual line phones
- Speakerphone
- Voicemail
- Wi-Fi high-speed Internet access
- Dataport
- Analog phone line
- Individual heat control
- Individual air conditioning control
- Windows that open
- 24-Hour Concierge
- Video checkout
- In-room safe
- Safe large enough to store and charge laptop computer
- 100% Smoke-free environment
- Adjoining rooms available to create a two bedroom suite

